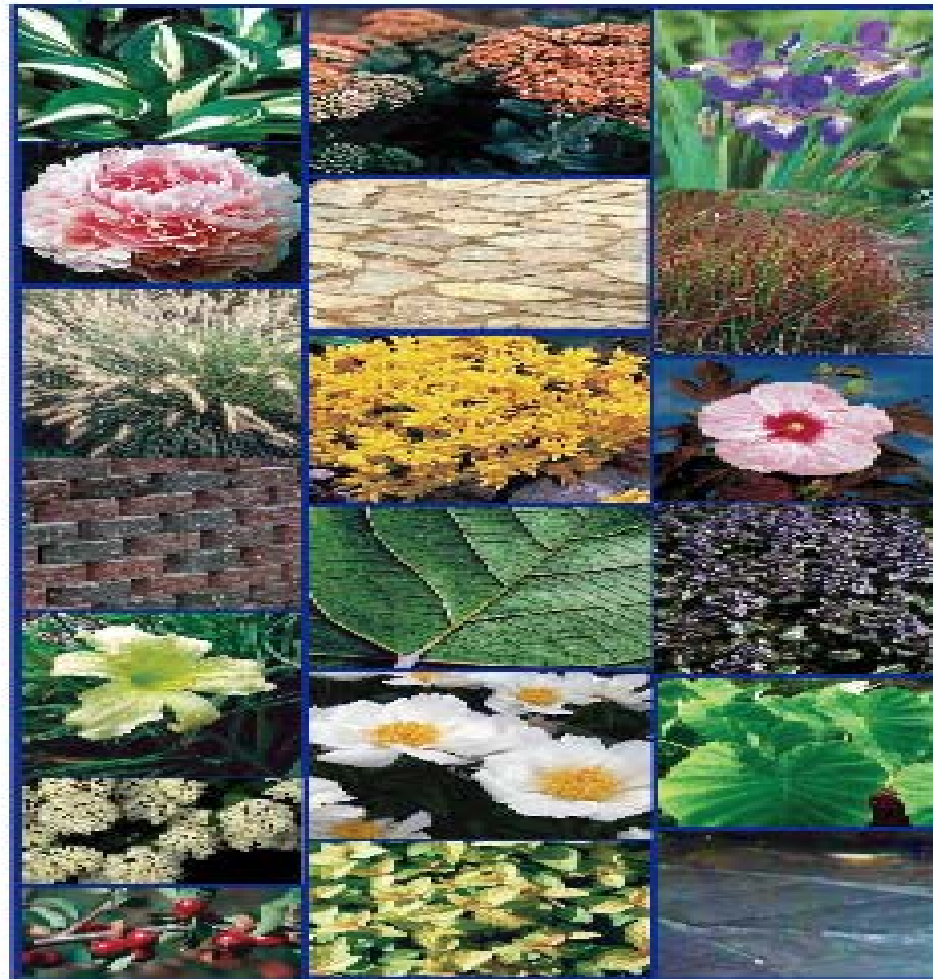


JAMESON

Landscaping Services, Inc.

"Preparation is the Foundation"

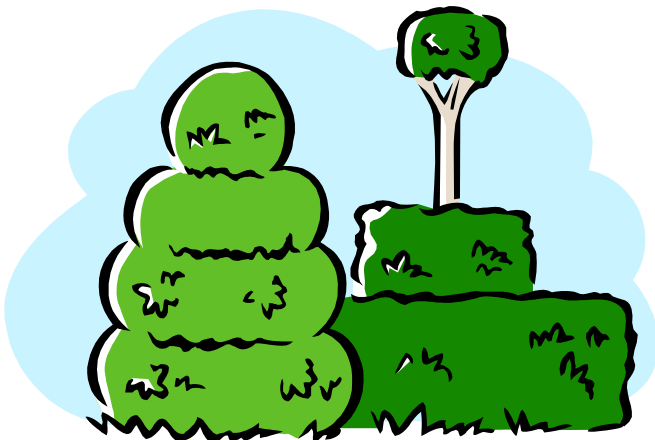


Lawn Maintenance Landscape Design
Planting Services Hardscapes
Groundcover Seasonal Services

Ph. 630-830-7266
Fax 630-830-7246



SHRUBS





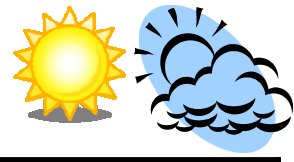
Burning Bush - Compacta



The Burning Bush Fire Ball, is an improved selection of compact burning bush with tighter branching and stem hardiness. Fire Ball resists stem die back even in the harshest winters. Plant this Burning Bush for its brilliant red fall color. The Fire Ball will give a jolt of fall color in hedges or landscapes. The bright green leaves are also attractive in the growing season.

Mature Height	5-7 feet
Mature Spread	3 – 5 feet
Soil Type	Widely Adaptable
Moisture	Widely Adaptable
Mature Form	Upright, Round
Growth Rate	Moderate
Sun Exposure	Full Sun
Fall Color	Red
Foliage Color	Green
Zones	4 thru 8

Alpine Currant



Alpine Currant is a dense multi-stemmed deciduous shrub. Its relatively fine texture sets it apart from other landscape plants with less refined foliage. It requires occasional maintenance and can be pruned at anytime. It is a good choice for attracting birds and makes a great hedge or screening plant.

Mature Height	5 feet
Mature Spread	6 feet
Soil Type	Widely Adaptable
Moisture	Dry to Moist, drought tolerant
Mature Form	Low-medium rounded form hedge fills to ground
Growth Rate	Medium
Sun Exposure	Full Sun to Full Shade
Flower Color	Yellow flowers, red berries
Fall Color	Yellow
Foliage Color	Green
Flowering Period	Late Spring – Early Summer
Zones	2



Forsythia - Goldilocks



Compact size and stiff vertical flower stems make this an attractive addition to the Forsythia family. Purple foliage hues in fall extend the interest. Good for a low hedge or spring accent. Prune immediately after flowering. Mature Forsythia benefits from having older woodiest stems removed all the way to the base.

Mature Height	2 feet
Mature Spread	2 feet
Soil Type	Normal, Clay, Acidic
Moisture	Widely Adaptable
Mature Form	short, Dense
Growth Rate	Moderate
Sun Exposure	Full Sun
Flower Color	Golden Yellow
Fall Color	Purple Leaves
Flowering Period	Early – Late Spring
Zones	5 thru 8



Forsythia - Sunrise



The Forsythia 'Sunrise', Forsythia x 'Sunrise', also known as Border Forsythia and Golden Bell is very easy plant to grow and transplants well. This plant is good in container plantings, the border plantings, and as a specimen or ground cover. Prune after flowering to keep the plant compact and to thin it out.

Mature Height	5 feet
Mature Spread	6 feet
Soil Type	Widely Adaptable, Well- Drained
Moisture	Widely Adaptable
Mature Form	Round, Dense
Growth Rate	Moderate
Sun Exposure	Full Sun
Flower Color	Bright Yellow
Fall Color	Purple Leaves
Foliage Color	Medium Green
Flowering Period	Spring (appear before foliage)
Zones	4 thru 8

Viburnum-Compact Korean Spice



This Compact Koreanspice Viburnum shrub is the perfect addition to any entrance or walkway. The richly colored, heart-shaped leaves have a wonderful fuzzy texture that adds interest. While in bloom, the fragrant scent is similar to that of a sweet smelling hyacinth. This is a relatively low maintenance shrub, and should only be pruned after flowering.

Mature Height	3 – 4 feet
Mature Spread	4 - 6 feet
Soil Type	Acidic
Moisture	Moist, Loose, Well-Drained
Mature Form	Oval, Upright, Spreading
Growth Rate	Moderate
Sun Exposure	Full Sun, Tolerant of PM Shade
Foliage Color	Rich Green
Flower Color	Pink- Tinged White
Fall Color	Reddish-Wine
Flowering Period	Early Spring, Black Fruits Late Summer to Late Fall
Zones	4 thru 7



Dwarf Korean Lilac



The Dwarf Korean Lilac is an extremely versatile garden shrub due to its striking spikes of fragrant lilac-pink flowers, small rounded foliage and a uniform compact shape. It works well as an accent piece, a hedge, or in a mass planting.

Mature Height	4 feet
Mature Spread	5 feet
Soil Type	Well-Drained
Moisture	Widely Adaptable
Mature Form	Uniform, Compact, full to ground
Growth Rate	Slow
Sun Exposure	Full Sun
Foliage Color	Burgundy in Spring to Dark Green
Flower Color	lilac-pink
Flowering Period	Late Spring
Zones	3



Wine and Roses - Weigela



Wine and Roses Weigela is a multi-stemmed deciduous shrub with an upright spreading habit of growth. This ornamental shrub stays relatively compact, making it ideal as an accent or as a mass planting. It may require occasional maintenance, but should only be pruned after flowering to avoid removing any of the current season's flowers. It is also known to attract hummingbirds.

Mature Height	5 feet
Mature Spread	5 feet
Soil Type	Adaptable
Moisture	Moist
Mature Form	Upright, Spreading, Full to Ground
Growth Rate	Medium
Sun Exposure	Full Sun
Foliage Color	Deep Purple-Wine
Flower Color	Rosy-Hot Pink trumpet-shaped
Fall Color	Brick Red
Flowering Period	Spring
Zones	5

ALL RIGHTS RESERVED.

The contents of this Plant Catalog were compiled by and for Jameson Landscaping Services, Inc. and are intended solely for educational purposes and to assist our clients in plant selection. Plant Information may vary slightly based on nursery/supplier.